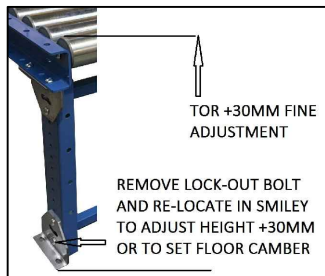


CROSS BRACE REQ'D TOR+750MM



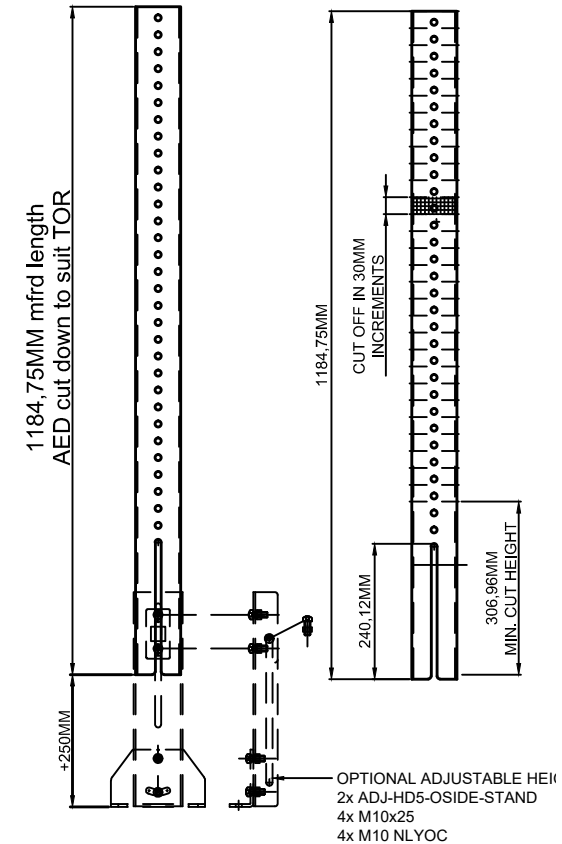
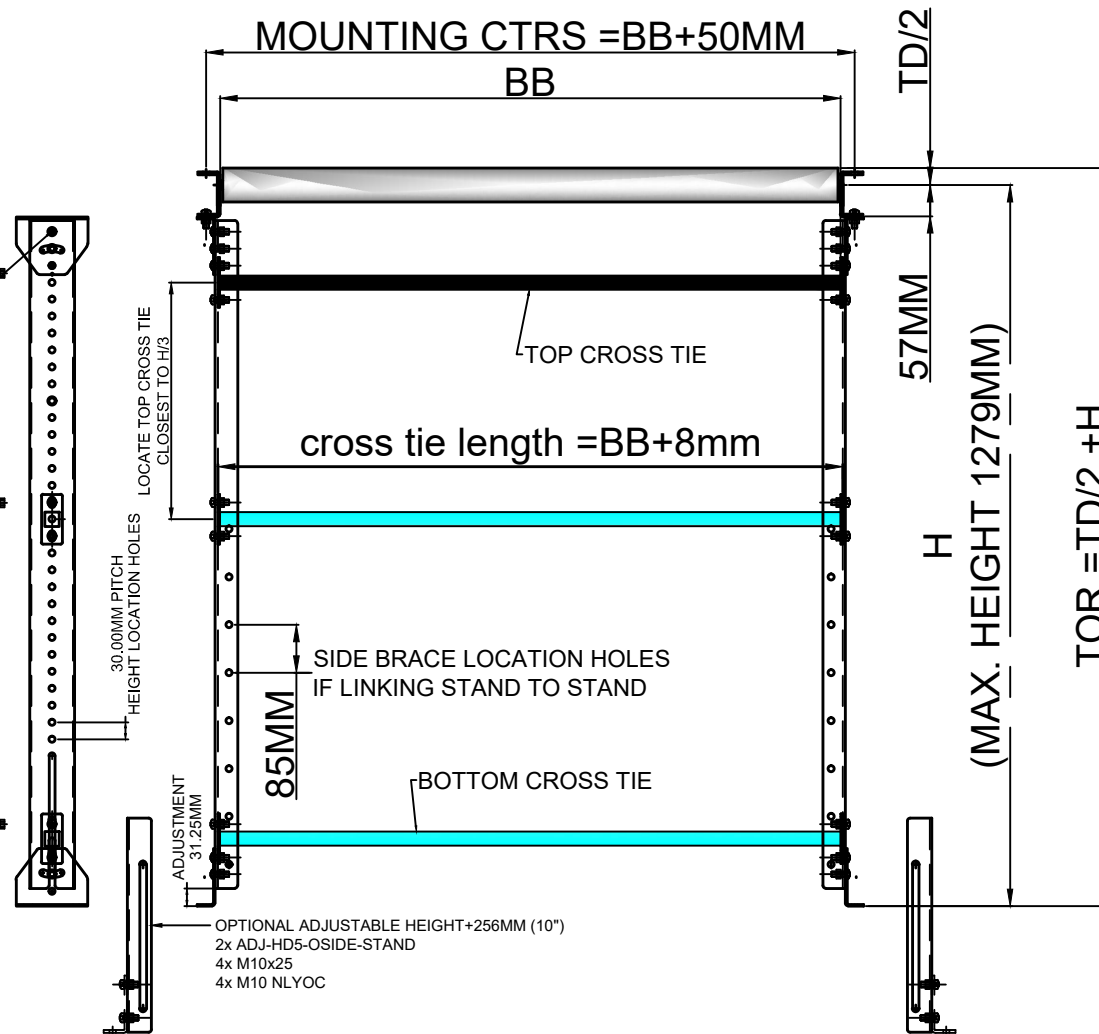
M10x25 BOLT TO LOCKOUT AND IN VERTICAL POSITION (90° TO FRAME ONLY)

M10x25 BUTTON SOCKET HEAD +M10 NYLOC QTY 20 PER STAND

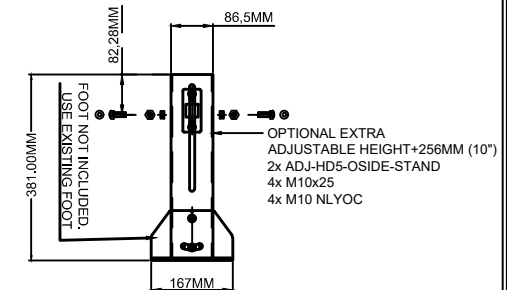


TOR +30MM FINE ADJUSTMENT

REMOVE LOCK-OUT BOLT AND RE-LOCATE IN SMILEY TO ADJUST HEIGHT +30MM OR TO SET FLOOR CAMBER



ADJ-HD5-XTR250



FINISH	PRE-GALV
MATERIAL	3 MILD STEEL
HEAT TREATMENT	----
LUBRICATION	---

DRAWN: P. BEVAN	DATE: 25.1.17
-----------------	---------------

TITLE: HD5 STAND 750KGS /STAND

DRG No.
