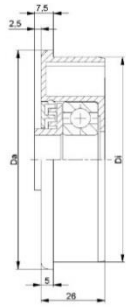


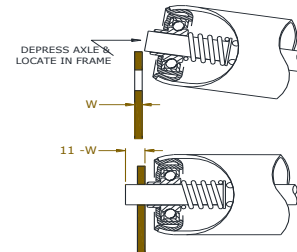
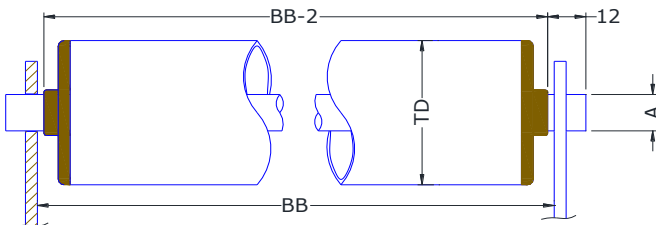
# KTR Universal –AX1 (spring loaded) rollers for Under Belt / Agricultural/ Manual handling



Found in >	MATERIAL	TUBE EXTRAS
Belt Conveyors	PL= Plastic	Rubber Sleeve*
Farming Equipment	BZP=Zinc steel	Bonded Rubber
Airports		Polyurethane
Cutting Equipment	SS=Stainless steel	

Roller Type	Roller Diameter	Tube Material			Axle	Maximum Length	Load Capacity†
		BZP	SS	PL			
PR-35	Ø35 x1.2	●	●	●	Ø8 / 8HEX	1000MM	60kgF udl
SSPR-35	Ø35 x1.2	●	●	●	Ø8 / 8HEX	1000MM	60kgF udl
PR-40	Ø40 x1.5	●	●	●	Ø8, 10, 12 / 11HEX	1400MM	80kgF udl
PRP-40	Ø40 x2.0	●	●	●	Ø8, 10, 12 / 11HEX	750MM	25kgF udl
SSPR-40	Ø40 x1.5	●	●	●	Ø8, 10, 12 / 11HEX	1400MM	80kgF udl
*PR-50KTR	Ø50 x1.5	●	●	●	Ø8, 10, 12, 14 / 11HEX	1600MM	140kgF udl
*PRP-50	Ø50 x2.8	●	●	●	Ø8, 10, 12, 14 / 11HEX	750MM	40kgF udl
*SSPR-50	Ø50 x1.5	●	●	●	Ø8, 10, 12, 14 / 11HEX	1600MM	140kgF udl
PR-60KTR	Ø60 x2	●	●	●	Ø8, 10, 12, 14 / 11HEX	2000MM	160kgF udl
PRP-60	Ø60 x3	●	●	●	Ø8, 10, 12, 14 / 11HEX	1000MM	60kgF udl
SSPR-60	Ø60 x2.5	●	●	●	Ø8, 10, 12, 14 / 11HEX	2000MM	160kgF udl
PRP-63	Ø63.5 x4	●	●	●	Ø8, 10, 12, 14 / 11HEX	1000MM	60kgF udl
PR89KTR	Ø89x3	●	●	●	Ø20	2100MM	430kgF udl
SSPR89KTR	Ø89x3	●	●	●	Ø20	2100MM	430kgF udl
PRP-90HD	Ø89x7	●	●	●	Ø20	1600MM	100kgF udl

IMPORTANT: †Load Capacity calculated on standard lengths. Please ask to confirm advisable load on quotation/order



Roller Type (ie PR50KTR)	
Installation Width (BB)	BB
Rubber covering. Please state finished Ø	Yes / No ; FOD
Axle A	Ø ; H
Quantity Required	
OB (over bearing boss*)	*
OA (over all axle length*) or L	*
*leave OB & OA blank if rollers are to suit installation width (BB)	

Found in >	MATERIAL	EXTRAS
Shop Checkout	PL= Plastic	Ø60 Rubber Sleeve fto
Food Packing		Ø50 ONLY
Belt Conveyors	BZP=Zinc steel	BZP axles
Farming Equipment		Rubber lagging
Airports	SS=Stainless	

Company Name and address:-

Signed.....Print.....

Date: Purchase order No.....

Collect or Send by Carrier – circle as appropriate

Comments: