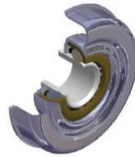
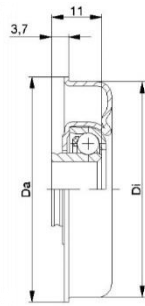


# RG 1200 AX1 Series (Spring loaded ) Rollers for manual handling –BZP STEEL



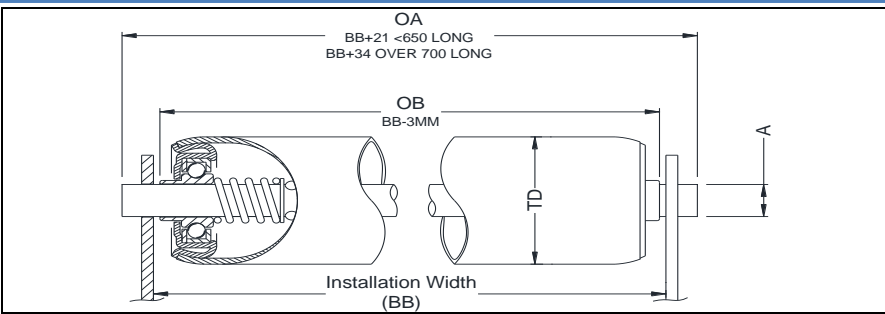
RG 1200 series are general purpose steel rollers with Greased bearings for medium to heavy manual applications

Found in >	MATERIAL	TUBE EXTRAS
Manual Conveyors	Zinc Plated (BZP) tube Steel bearings & Steel axles	BS 54 OR BS60 Sleeve RG50MD ONLY
Despatch Areas		Bonded Rubber
Airports		Polyurethane
Packing Lines		O-Ring Grooved

Roller Type	Roller Diameter	Axle round	Axle Hexagonal	Bearing Type +Housing	Load Capacity†
<b>RGM50-X-XXX-XXX-AX1</b>	Ø50 x1.5 wall	Ø10 Ø12 Ø14	11H	MTR50 .30+steel	120kgF udl
<b>RGM50MD-X-XXX-XXX-AX1</b>	Ø51 x2 wall	Ø10 Ø12 Ø14	11H	MTR50 .30+steel	120kgF udl
<b>RG60MD-X-XXX-XXX-AX1</b>	Ø60 x2 wall	Ø10 Ø14 Ø15	-	MTR60 .30+steel	160kgF udl
<b>RG80MD-X-XXX-XXX-AX1</b>	Ø80 x2 wall	Ø12 Ø14 Ø15	-	MTR80 .30+steel	180kgF udl

M2M ORDER CODE AXLE DIA FOLLOWED BY OB & OA ( EXAMPLE **RG80MD12-12-340-380-AX1**)

**IMPORTANT:** Load Capacity calculated on standard lengths. Please ask to confirm advisable load on quotation/order.



Bearing housing: steel swaged

Lubrication Greased

Temp range -20c +120C

Weight class Medium to Heavy

Conveyor Roller; Customs Code 8428399000

Roller Type (ie RG50MD)	
Installation Width (BB)	
Axle A & shape	
Over bosses* (OB)	
Over Axle8 (OA)	
Quantity Required	
*leave blank if rollers are to suit installation width (BB)	



Company Name and address:-

Signed.....Print.....

Date: Purchase order No.....

Collect or Send by Carrier – circle as appropriate

Comments:

**Please sign & return Order**